

CLIMBERS' CLUB BULLETIN

Issue No. 28. Third Series No. 1. October 1964.

CLIMBERS' CLUB BULLETIN

EDITED BY JOHN NEILL

1964 The Climbers' Club, London

This is the twenty-eighth issue of
the CLIMBERS' CLUB BULLETIN, Third series No. 1
Edited by: John Neill
Assistant Editor: N. A. J. Rogers

Business Manager: M. J. Cunnington
18 Northumberland Place, London W.2

© The Climbers' Club, 1964

*Printed by The Cloister Press Ltd., Heaton Mersey, Stockport, Cheshire
and obtainable from:*

*Camtors, Jackson and Warr Ltd., 1-2 Hardwick Street, London E.C.1
or principal booksellers and mountaineering equipment retailers*

Contents

Apologia 4

New Climbs and Notes

- I. Snowdonia P. Crew 6
 - II. Cornwall 35
 - III. South East England 35
 - IV. Cairngorms A. N. Husbands 35
 - V. Ireland S. Rothery and F. P. Devlin 36
 - VI. Norway F. L. Jenkins 38
 - VII. Canada M. E. B. Banks 39
 - VIII. Kulu R. G. Pettigrew 39
 - IX. Atlas R. Quine 39
- Sub-committee on Welsh Nomenclature J. Neill and
R. Elfyn Hughes 41
- Mountaineering — an Indian view G. C. Joshi 43
- Last Demise of the Rock and Ice 45
- Editorial 47
- Reviews 53
- Officers of the Club 60

Apologia

At the Annual General Meeting of the Climbers' Club in London on 10th February, 1911, the following resolutions were among those passed:

"5. That after the publication of the 50th number of the *Journal*, being the number for December, 1910, only one number of the *Journal* be published in each year.

"6. That, in addition to the *Journal*, a Club *Bulletin* be published so often in any year as occasion may require, and that such *Bulletin* be sent to each member of the Club but not sold to the general public. That the Club *Bulletin* contain lists of new members, short particulars of new climbs, short notes of varying conditions of old climbs, notes of Club meets and dinners, lists of additions to the Club library, Committee notes and other items of information and interest to members of the Club."

This arrangement worked well at first, but was disrupted by the First World War, and for many years publication of both *Journal* and *Bulletin* was extremely irregular. The May 1932 number of the *Bulletin* was the last to appear, details of new climbs etc. thereafter appearing in the *Journal*, which since 1937 has achieved regular annual publication with the exception of one year just after the Second World War.

But the climbing world is now very different from what it was in the thirties, or even the early fifties, and the publication of new climbs in the *Journal* is no longer wholly satisfactory. There is a large demand outside the Club for the information contained in "New Climbs and Notes", which is not properly met by printing it with a preponderance of other matter in a relatively expensive *Journal*. The best time for publication of information on new climbs would be in the spring or early summer, but delays occasioned by articles often hold back the *Journal* until much later in the year.

With these facts in mind we have decided to revive the *Bulletin* experimentally, primarily as a vehicle for "New Climbs and Notes", and so intended for circulation outside as well as within the Club. The *Journal* will contain the main articles, i.e. accounts of major expeditions, general descriptions of climbing in different parts of the world (especially, we hope, Wales), articles of literary merit, etc., and also verse, obituaries, and reviews of major books, while the *Bulletin* will include "New Climbs and Notes", reviews of guidebooks and club journals, editorial summarizing the year's events in the Club, correspondence and other lesser contributions, a list of the officers of the Club, and in general most of the items which have so far appeared in smaller print in the *Journal* — including accounts of meets and dinners if required, although there seems little demand for these nowadays. The other items mentioned in the resolution of 1911 are best contained in Club circulars to members, rather than in the *Bulletin*.

If the present number is a success (and the type will be kept for a while in case demand outside the Club warrants reprinting) it is intended to publish the

Bulletin at least once a year, as early in the summer as possible, bringing out the *Journal* later in the summer.

In the present number the accounts of Welsh new climbs have been set up experimentally in such a way that they can be cut out and inserted in the backs of the appropriate guidebooks (all new Club guidebooks are being provided with blank pages at the end for the purpose). Anyone who wishes to do this and yet preserve an undamaged copy of the *Bulletin* can of course achieve this by buying an extra copy of the *Bulletin*. The Editor will be glad to hear from anyone (whether a member of the Club or not) who has views on any aspect of the *Bulletin* or its make-up, particularly if he has constructive suggestions to make.

New Climbs and Notes

I. SNOWDONIA

P. CREW

Undoubtedly the most important event of 1963 was Ingle's new route on Craig yr Ogof, Cwm Silyn. This route takes a superb line up a very improbable-looking piece of rock and is comparable to Vector for quality and difficulty. It is to be hoped that this route will re-establish free climbing on Craig yr Ogof, which has been used for a long time as a peggers' playground. Most of the numerous confusing pegs in various parts of the cliff have now been removed.

Swallow had a fine year with his new route on Castell Cidwm, and made a contribution to the anti-peg movement by his second ascents of Agrippa (Craig yr Ysfa) and the Groove on Llech Ddu (with MacNaught Davis), both with considerably less aid than on the first ascents. Unfortunately some of the younger generation cannot be said to be doing the same and keep setting precedents which some of us may find difficult to understand.

Cloggy received a fair battering during the two good spells of weather at Whitsuntide and in September. Notable repetitions were Serth (4th and 5th); Daurigol (2nd); November (3rd, 4th and 5th); Troach (4th); the Shadow (2nd); Haemagoblin (2nd) and Carpet Slab (3rd, 4th and 5th). The latter climb seems to be much easier than the guide indicates and should become more popular. J. A. Austin and E. Metcalfe made the second ascent of the Pinnacle Girdle in eight hours. The new guide, as was foreseen, unfortunately attracted many more people onto the harder climbs, but the grading resulted in a certain amount of confusion. Some attempts to rectify this are in hand.

J. Brown has taken to developing his secret cliffs in outlying areas. Details of ascents, but no names, are to be found in the Cromlech Club log book.

Younger members of the Rock and Ice were somewhat taken aback by Austin's note which was quoted in last year's "New Climbs and Notes". But, since the quotation seems to be a very fair appraisal of the situation, we can find no reason to apologise.

A. CARNEDDAU

A new edition of the guide-book is virtually ready for publishing, but the following route deserves detailed recording:

CRAIG YR YSFA

Cirque Rib 180 feet. Hard Very Severe.

Takes the obvious line of grooves up the right-hand side of the Cirque, overlooking the latter. A fine steep route on good rock.

Start a few feet to the right of a rib at a rightward-facing groove which has a tree at 25 feet and an overhang at 30 feet.

- (1) 60 feet. Climb the groove to the overhang. Traverse left under the roof with a peg and sling for aid until a ledge can be reached by a strenuous move. Peg runner. Move left across the groove to the rib and go up this to another overhang. Move right to a ledge and belay.
- (2) 60 feet. Using a shoulder gain the groove on the left and go up the crack on the left wall. After 30 feet easier grassy rocks lead up to a ledge overlooking the Cirque.
- (3) 40 feet. Up the rib till it bulges; trend up the wall overlooking the Cirque and up to a ledge with a pinnacle.
- (4) 20 feet. Step off the pinnacle and climb to the top.

First ascent: March, 1963. J. A. Austin and R. B. Evans.

B. CWM IDWAL

EAST WALL, IDWAL SLABS

Suicide Wall, Route 2 150 feet. Extremely Severe.

Start below and to the left of a crescent-shaped recess in the lower part of the wall between Route 1 and Suicide Groove. The route ascends the wall diagonally up to the right,

finishing up the long slabby rib in the same line as the Groove.

- (1) 150 feet. Climb a short steep wall to reach the crescent-shaped recess at its top left-hand end. Descend the recess and climb up the blunt rib on the right to reach a line of flakes leading away to the right. Hand-traverse along the flakes to a peg (in place), and go up the wall above the peg until the angle eases to a small ledge. Climb the slabby groove above for about 30 feet, then go up the arête on the right finishing on grass ledges.

First ascent: 22nd September, 1963. P. Crew, B. Ingle.

IDWAL SLABS — MISCELLANEOUS

Pocket Wall 300 feet. Just Severe.

An interesting little route up the wall overhanging Introductory Gully. Will probably become easier.

Start: From the foot of the gully a line of large pockets runs up the wall. About 20 feet right another line of smaller pockets leads to a shallow groove. This is the route.

- (1) 75 feet. Up, rather on the right, and at about 10 feet move left to the main line. The final moves are rather awkward.
- (2) 100 feet. One can scramble right on to Idwal Buttress; but a gangway line on the left leads, with enjoyable exposure, to a steep little step onto easy slabs. Up to a stance and poor belay.
- (3) Carry on in the same line, easy climbing and scrambling towards the upper cliff. (Or go along a ledge on the right to Idwal Buttress.)

First ascent: 7th December, 1963. J. A. Austin, A. J. J. Moulam (alternate leads), C. T. Jones.

CLOGWYN Y GEIFR — NORTH CLIFF

God's Little Acre Hard Very Severe.

Start: At the foot of East Gully.

- (1) 50 feet. Climb a broken and rather loose-looking wall, trending right, to a ledge. Piton belay.
- (2) 110 feet. Gain a small rock ledge on the left, then make a difficult move up the wall to the left of a thin crack to gain a difficult traverse line left to a scoop to easier ground and a heather ledge with a spike.
- (3) 40 feet. Traverse left and climb the steep exposed rib to the top.

First ascent: June 1963. D. Yates, D. Howard-Jones.

Junior Slab 290 feet. Hard Very Severe.

Start: About 30 feet right of the foot of East Gully.

- (1) 20 feet. Up to a wide shallow recess.
- (2) 35 feet. A low-relief rib above the belay leads to a large ledge. Belay on the smaller one above.
- (3) 85 feet. A peg (left in) enables a delicate traverse to be made 25 feet right to the foot of an obvious scoop. Follow the scoop to the left end of a gangway, and move right up this to a small grass ledge. Up 10 feet to more grass and go left to a good line belay.
- (4) 20 feet. A wall to the foot of an overhanging groove.
- (5) 30 feet. The right-hand rib of the groove.
- (6) 30 feet. Left to the arête at the edge of the crag. (One can escape here.)
- (7) 70 feet. Up to the right, then up to the top, as for the previous climb.

First ascent: Easter 1960. J. A. Austin, F. Spence (alternate leads).

The Druid's Doghouse 300 feet. Hard Very Severe.

Takes a line up the two V-chimneys in the centre of the buttress, to the right of Devil's Nordwand.

Start below the V-chimney at the toe of the buttress.

- (1) 80 feet. Climb the V-chimney, with a short excursion on its right arête about half-way up to a slab. Up the slab to a small stance and peg belay.
- (2) 30 feet. Diagonally up right up steep grassy rock to a stance and belay below the second V-chimney.
- (3) 90 feet. Up to the V-chimney and climb it to the top with a sling for aid (a peg was used to install this thread but is not necessary). From the top of the chimney move up and left to a grass ledge. A short slab leads to a large grassy terrace.
- (4) 100 feet. A short wall followed by easier climbing and scrambling to the top.

First ascent: 22nd May, 1964. H. I. Banner, K. Rhodes.

C. TRYFAN AND GLYDER FACH**BOCHLWYD BUTTRESS****The Wrack** 120 feet. Hard Very Severe.

Start: A slab occurs directly below a groove about 30 feet left of Chimney Climb. Start at the bottom of this, just right of the start of Wall Climb.

120 feet. Go diagonally up right over the slab. A short traverse left into the groove proper is made just below a detached ribbed flake. Climb this flake strenuously to a small ledge above and to the left. A few feet above the ledge re-enter the groove and climb it to a small overlap.

Avoid this on the left. Easier ground leads directly to the top. A good belay and stance can be made just short of the top, maintaining reasonable contact between leader and second.

First ascent: 28th August, 1963. T. F. Allen, W. Hurford.

D. LLANBERIS NORTH

CARREG WASTAD

Old Holborn 150 feet. Hard Very Severe.

A fine, steep route up the buttress between Dead Entrance and Bole Way. Start up Bole Way and climb up to the first bole.

(1) 90 feet. Climb a steep slanting groove up to the left to the prominent overhang level with the foot of the long groove on Bole Way. Move left and up another steep groove to under a roof. Move left round the corner (sling for aid) and up the steep arête above to small ledges and belays.

(2) 60 feet. Climb the steep slabby face trending right to finish near Bole Way direct finish.

First ascent: May, 1963. P. Crew, B. Ingle (leading through), D. Potts.

The Castle 205 feet. Very Severe.

Takes a line more or less up the arête of the tower-like buttress on the extreme right of the crag. A companion route to Cornix.

Start: At the foot of the grass rake bounding the Red Rock on the right.

(1) 50 feet. Up on the right of the damp break to a spike

below the bulge; step right and climb the steep crack to a small stance. Tree belay.

(2) 45 feet. Descend a little and go round the corner on the left to the foot of an open groove on the front of the tower. Climb the groove to the top of a pedestal. Stance on the right. (It is possible to escape into the gully at this point.)

(3) 20 feet. The wall above is undercut, so swing right into a shallow groove, step up on the arête then round to the front again, where good holds lead to a junction with Halan. There is a good thread belay low on the left.

(4) 30 feet. Move up right to the obvious traverse line leading round the arête, to an awkward stance and chock belay below a short crack.

(5) 60 feet. Up the crack and wall above to a detached flake; pull up to the right on huge holds, in fine position, on to the final slab and climb this trending left to finish on the arête.

First ascent: 28th April, 1963. R. G. Wilson, J. H. Russell, B. Hendricksen (alternate leads).

Yellow Crack 70 feet. Hard Very Severe.

This is the prominent crack which connects the crux of the old Girdle to Shadow Wall.

First ascent: 1958. H. I. Banner, C. T. Jones (probably done before).

Directly above the summit of Carreg Wastad is a small compact but blocky buttress with a prominent slanting crack on its left:

Ampyx 105 feet. Very Severe.

Start below the slanting crack.

- (1) 35 feet. Up the wall to the crack proper and continue up this to a good ledge. Thread belay.
- (2) 35 feet. Move right along the ledge until good flakes lead up the steep wall above to an awkward landing on a sloping ledge beside a huge, perched block. Tree belay.
- (3) 35 feet. Go through the tree and climb the difficult overhanging crack to the top.
First ascent: 24th March, 1963. R. G. Wilson, J. H. Russell.

The following routes lie on the wall above and to the East of Carreg Wastad, on which lies 'Little Whizzer':

Ensis 170 feet. Hard Severe.

Takes the obvious, undercut, mossy cracks on the left of the wall.

Start: 50 feet left of Little Whizzer at the foot of a gully.

- (1) 45 feet. Traverse right with difficulty above the overhang and pull into the groove above. Continue on good holds until it is possible to make an awkward step to a grassy ledge on the right. Belays on the right.
- (2) 75 feet. Step left across the groove and up on good holds to a ledge on the arête. Traverse left to the foot of a vee groove and climb this, pulling out left on to a quartz-streaked slab which leads to a grassy bay.
- (3) 50 feet. Climb the steep chimney on the right, moving left up a pleasant slab at the top.
First ascent: 23rd February, 1963. R. G. Wilson, W. Smith.

Solen 160 feet. Very Severe.

Takes a line up the wall between Ensis and Little Whizzer starting below an obvious short groove slanting left.

- (1) 75 feet. Climb a short wall into the groove, up this and exit left to a heather clump. Up the slab above to a mossy line leading right, which is followed to a short crack below and right of the first stance on Ensis. Climb the crack and the steep wall above, difficult, to a quartz shelf. Peg belay.
- (2) 45 feet. Traverse the shelf until it peters out, and continue steeply across a corner to the grass bay on Ensis.
- (3) 40 feet. Up the corner on the left of the chimney to the top.
First ascent: 23rd March, 1963. R. G. Wilson, B. Hendricksen, J. H. Russell (alternate leads).

The Bearded Crack 100 feet. Severe.

On the smaller buttresses to the right of the cliff is a large holly above which are twin cracks, the left-hand one containing numerous beards of grass.

Start: To the right of the holly at a clean-cut crack.

- (1) 25 feet. Climb the crack by layback and wedging to a stance on top of the flake. This pitch is technically Very Severe but short.
- (2) 75 feet. Move left and up the wall between the cracks on good holds, moving into the left-hand crack near the top. A pleasant pitch.
First ascent: 24th February, 1963. R. G. Wilson, J. H. Russell (alternate leads).

Pholidomya 90 feet. Very Difficult.

The rib right of Bearded Crack gives pleasant climbing on excellent rock.

Start: As for Bearded Crack.

- (1) 90 feet. Up the rib, steeply at first, then slightly right on good holds to a grass ledge. (A stance may be taken here.) Continue up the crack to the overhang then traverse left to the nose and pull up to the top.

First ascent: 23rd March, 1963. R. G. Wilson, J. H. Russell.

E. LLANBERIS SOUTH

DINAS MOT

Nexus 450 feet. Hard Very Severe.

Climbs the slabby arête to the right of Plexus. The groove on the upper pitch appears to be virtually impossible, thus spoiling the line a little, but the second pitch is one of the finest in Wales, on perfect rock and in superb position.

Start as for Plexus.

- (1) 30 feet. Climb up the heather groove to the tree.
- (2) 150 feet. The object is to get up to the square cut overhang on the arête. Start up the wall on the right and hand-traverse at a low level to the slab under the overhang. There is a fine natural thread runner on the arête itself. Layback up the arête and round the overhang to gain a standing position in the thin crack above, and go up this to a resting place. Continue up the narrowing slab above until it is necessary to move right, round the arête, to the foot of an overhanging crack. Up this on

good holds and the grooves above to a fine stance at the bottom right-hand corner of the overhangs of Plexus.

- (3) 60 feet. Up the slab on the right and back left past a large block to a stance below the final groove. Peg belays.
- (4) 100 feet. Make a difficult hand-traverse round the vertical wall on the left (peg) to join the upper reaches of Plexus.

- (5) 120 feet. As for Plexus.

First ascent: 21st May, 1963. M. Boysen, P. Nunn.

Tremolite 400 feet. Hard Very Severe.

A complicated route which takes a direct line up the whole of the Western Wing between Slow Ledge Climb and Bluebell Cracks. The third pitch climbs the thin crack up the large blank slab to the right of the prominent groove of Dolerite Dump and the fifth pitch takes the very steep buttress to the left of the final pitches of Bluebell Cracks. A superb route, with varied climbing on good rock.

Start at the foot of the pear-shaped flake left of the first pitch of Bluebell Cracks.

- (1) 50 feet. Climb over the small bulge at the base of the flake and up to a stance at its top. Move up and right to belay below the ugly-looking overhanging crack.
- (2) 30 feet. Climb the crack on good jams to the grassy scoop above. Good flake belays.
- (3) 100 feet. Traverse round the arête low down and follow the same line across the slab to the foot of a thin crack. Start this with a sling for aid and continue steeply to a small ledge. Finish up to the left and belay below the terrace.

(4) 30 feet. Grass scrambling across the terrace to spike belays below a roof on the upper buttress.

(5) 130 feet. Climb the wall on the left of the roof and up a shallow groove (peg) until it is possible to move right above the roof. Continue up the wall above, zig-zagging to avoid difficulties, and belay in a grassy bay.

(6) 60 feet. Move left and up to a huge roof. Climb the arête on the right and move right into a cracked groove. Up this to join the last few feet of Bluebell Cracks.

First ascent: 29th August and 14th September, 1963. P. Crew and B. Ingle.

Gollum 270 feet. Hard Very Severe.

Start: At the top of a grass pedestal below and to the right of the Mole. The route follows the line of slab under the main overlap of the Mole and eventually climbs the overhang to join it. Not a particularly good route, but has some interesting climbing.

(1) 40 feet. Climb diagonally upwards to the right until an overhang can be taken with the aid of a peg. Up and slightly left to a peg belay.

(2) 60 feet. Traverse right to the foot of a clean groove and climb this to a tree belay.

A 70-foot walk to the left brings one to the belay at the top of the first pitch of the Mole.

(3) 110 feet. Up the slab above to the overhang, then traverse right for 15 to 20 feet. Climb the roof above with a sling on a peg and up the groove above, moving left onto the arête. Continue diagonally left up a small wall to a belay on the Mole.

(4) 60 feet. The last pitch of the Mole.

First ascent: About March, 1964. B. Webb, A. Harris.

Beorn 230 feet. Hard Very Severe.

Start: At the top of the grass rake which cuts across the steep wall below the Mole and Gollum. The route follows a line near to the arête, crossing Troglodyte Wall, and climbs several impressive overhangs. A block has now come off the arête on pitch 1 and the climb may be very much harder than before.

(1) 110 feet. Up a short wall to a 20-foot groove. Up this, traverse a few feet left to under a roof, and do a tension traverse round the arête on the left, from a peg in the roof. Continue up to the left, up a slab to the top of a long diagonal overhang. Pull around this and belay on small flakes and a grass stance.

(2) 120 feet. Up a short wall, then traverse left across a big groove and go straight up to a big overhang. Pull over this on reasonable holds, then up and left to a large overhang. Evade this by a mantelshelf on the left then climb a short groove to the top.

First ascent: About April, 1964. Barry Webb, A.N.O.

(Un-named) 200 feet. Hard Very Severe.

Start: Slightly to the left of the Mole and a little higher up the gully.

(1) 40 feet. Climb a short slabby wall to a grass stance.

(2) 80 feet. Up to the right to join the rib of the Mole. Traverse left under the overhang until it can be surmounted with the aid of a peg. Up the slab above to the bottom of the obvious groove.

- (3) 80 feet. Up the groove, then more easily up broken ground to the top.
First ascent: About October, 1963. M. Boysen, A. Harris.

CYRN LAS

The Great Buttress 400 feet. Hard Very Severe.

Climbs the long slender rib between Subsidiary Grooves and the Grooves, finishing up a series of overhanging grooves on the right of the final nose.
Start as for Main Wall.

- (1) 50 feet. Scramble up to the right and up a short chimney to a grass ledge below the first pitch of Subsidiary Groove.
- (2) 100 feet. Climb a flake crack on the left of the arête to a niche and move right onto the arête. Continue straight up the arête, trending left at the top to the Helter Skelter Chimney (descended on the girdle). Belay at the top of this.
- (2) 80 feet. Step right onto the slabby nose and go up to a small ledge. Move right to a shallow groove and climb this to a ledge. Along this to the left, then up a diagonal flake to the right, round the corner, to a grass stance in fine position.
- (3) 40 feet. Climb the overhanging corner to a niche, and exit from this with a peg placed as high as possible. The jams improve and it is eventually possible to move left to a good stance and belays.
- (4) 130 feet. Climb up to the right and up a steep wall and the

rightward-slanting groove which eventually joins the last pitch of the Grooves just below the peg.
First ascent: 4th May, 1963. B. Ingle and P. Crew.

CLOGWYN Y DDYSGL

The Infidel 350 feet. Very Severe.

Well to the right of and higher than the main section of Clogwyn y Ddyssl is a large slabby-looking buttress. The route follows the reddish flake crack up the right-hand side of the lower section and finishes up the broken slabby arête above. Scramble 150 feet up pleasant slabs to grass ledges at the foot of the flake crack.

- (1) 100 feet. Climb the flake, moving right at the overhangs to a ledge on the arête. Up a short steep groove to a grass ledge with belays on the left.
- (2) 100 feet. Climb up the steep diagonal crack and the short groove above. Trend left up pleasant slabs to huge flake belays in a grassy bay.
- (3) 50 feet. Climb the steep wall up the back of the bay on good flakes.
- (4) 100 feet. Move up left to the prominent arête, and from the huge spike at the foot of the arête climb up the left-hand side, finishing up a rather loose groove at the top.

First ascent: 20th April, 1963. P. Crew and B. Ingle.

The Rosy Crucifixion 200 feet. Hard Very Severe.

A superb route up the front of the buttress left of the Infidel.

Start from the grass ledges at the foot of the flake crack of the Infidel.

- (1) 120 feet. Start diagonally up to the left and go up to a tiny ledge level with the foot of the flake crack. Move diagonally left up to a blind flake crack and climb this to a small spike. Move right to a ledge in the middle of the wall. Up 10 feet past a loose spike and follow a thin diagonal crack (peg) up to the foot of the bottomless groove on the right. Climb this groove (peg) to the small roof and move left under this to a narrow ledge. Belays on the left.
- (2) 80 feet. Follow the crack line on the right more easily, moving left at the top. Continue easily to ledges and belays near the top section of the Infidel.
- First ascent: 20th September, 1963. P. Crew and B. Ingle.

F. CLOGWYN DU'R ARDDU

- Slurp** 120 feet. Hard Very Severe.
Takes the steep loose wall to the right of Bauble. Said to be comparable to Cemetery Gates.
First ascent: 1963. C. J. Mortlock and party.
- The Little Krapper** 150 feet. Extremely Severe.
The slabby arête near the foot of East Gully. Three pitches and two pegs (in the grass).
First ascent: 1963. C. J. Mortlock and party.

- The Boulder Direct** 150 feet. Extremely Severe.
Start below and to the left of the obvious long groove parallel to the Black Cleft.
- (1) 150 feet. Traverse into the groove and go straight up it to a large flake, invisible from below. Move right onto the

arête and up to the level of the overhangs. Bridge across the top of the groove and fix a peg in the quartz crack. Traverse left on undercut holds past the hanging flake to footholds on the left. Continue diagonally left up the featureless wall to a shallow depression. Leave this on the right and with an expansion peg (in place) climb the wall above till it is possible to move left onto the Boulder original route. Follow this for a few feet, then belay in a niche on the left (pegs).

First ascent: 21st September, 1963. P. Crew, B. Ingle.

Little Eastern 150 feet. Very Severe.

On the Far Far East Buttress. Below and to the right of Boomerang is a steep smooth wall bounded on the right by an obvious groove; this is the route.

Start at the foot of the groove.

- (1) 80 feet. Up a short slab to the foot of the groove and climb it to a grass ledge below an obvious crack; some loose rock. Climb the crack, moving right at the top, then go left to a ledge with perched blocks.
- (2) 70 feet. Move left awkwardly into a flake chimney and climb it to a large grass ledge. Belays 10 feet up. Scramble off to the right onto Far Eastern Terrace.
- First ascent: 30th May, 1964. R. G. Wilson, E. Townsend.

G. SNOWDON SOUTH

CRAIG Y LLYN

Peachpla Very Severe. 210 feet.

This climb takes a line directly up the middle of the cliff and is just to the left of Aquila in its lower half. An obvious

feature is a steep rising gangway from left to right. A steep and varied route.

Start: Just before the Sanctuary, close to the foot of the gangway.

(1) 70 feet. Climb a slabby wall, then pull into the start of the gangway and climb it to a piton stance.

(1a) 50 feet. Cross a little slab, swing onto the gangway and go up this to a piton belay and small stance.

(2) 40 feet. Go down for a few feet and then climb a cracked pillar on the left. Step from the top onto a wall and a small perch and piton belay.

(3) 60 feet. Climb the wall behind and traverse right to the foot of a very steep corner crack. Go up this (peg) and belay on shattered blocks.

(4) 60 feet. Step left onto a ledge and go up to a niche. Reach out left for an awkward mantelshelf, to finish on easy ground.

First ascent: 1962. C. A. G. Jones and party.

Variation start: May, 1963. C. T. Jones, R. F. Jones.

CRAIG Y GELLI

Cursor 150 feet. Hard Very Severe.

The main face is lined at the top with overhangs. This climb goes up the slabs beneath them at the right-hand end. Good continuous climbing.

Start: At the foot of the wooded gully of Pothook.

(1) 70 feet. Traverse 20 feet up and to the left to a fault in the slab. Climb this to an awkward step left to a small ledge and poor piton belay.

(2) 30 feet. Go back right and bridge up into an overhanging groove. Unseen good holds lead to the large ledge and tree belay.

(3) 60 feet. Traverse left on the big flake to the break in the big roof. Pull over the overhang using a peg for aid and two more slings, climb the corner and then hand-traverse left on a big flake to easier ground.

First ascent: 10th May, 1964. C. E. Davies, C. T. Jones, A. Cowburn, finishing up Pothook.

Last pitch added: 20th May, 1964. D. Alcock, S. Williams.

Tornado-Hurricane 170 feet. Hard Severe.

There is a gully to the left of the main cliff. This climb starts at the foot of a corner below a prominent overhang about 50 feet to the right of the gully. Slight but pleasant.

(1) 70 feet. Climb the corner to the overhang and pull awkwardly over the top to the right. Step back to the left above the overhangs to gain a prominent small ledge. Climb the wall above, to a good ledge and pinnacle belay.

(2) 50 feet. Step awkwardly into a tiny V-groove behind the belay and go over a small overlap to a good belay.

(3) 50 feet. Climb the crack and the easy chimney above.

First ascent: Pitches 1 and 3 were climbed as part of Tornado (see last year's *Journal*) on 14th October, 1962. N. Gough, J. G. Thomas, R. E. J. Gough. Pitch 2: April, 1964. D. Alcock, C. T. Jones.

CRAIG BWLCH Y MOCH

Grotto 165 feet. Hard Very Severe.

Start: Either climb the first pitch of Christmas Curry and traverse horizontally left to an obvious flake belay or climb the gully on the left to the same place.

- (1) 45 feet. Climb straight up the wall above the flake to the overhang. Step right to a spike runner then left to the bottom corner of a steep slab. Go up the groove and then diagonally right to a belay under the roof.
- (2) 60 feet. Move round the roof and go up to a second roof. Surmount this and climb to a large block belay.
- (3) 60 feet. Step left and traverse diagonally left to a sloping ledge; step left to a groove and climb this to the top.
First ascent: 25th April, 1964. T. W. Heatherly, A Davies (alternate leads).

The Fang: Left-Hand Variant 190 feet. Very Severe.

This route takes the grooved rib on the left of Fang.

Start as for Fang.

- (1) 40 feet. As for Fang to the top of the hard corner groove.
- (2) 30 feet. Up the corner at the back of the ledge to the overhang then left to a tree on the ledge.
- (3) 120 feet. The wall is now climbed to the prominent overhang with a square chimney on its edge. Step left onto a bottomless rib and with the aid of a peg (in place) swing out into the chimney; climb this with difficulty to a resting spot. Now take the groove and its right-hand fork to the top.

First ascent: D. Yates, G. Simpkin.

Diadic 170 feet. Extremely Severe.

A very steep last pitch in an impressive rock situation.

- (1) } As for One Step In the Clouds.
- (2) }

- (3) 80 feet. Take a slightly higher line than Nimbus; traverse right to the fang of rock on the arête, and move round on hand-jams into a groove. Climb this to the layback pitch on Vector and finish up this.
First ascent: 3rd June, 1964. E. Penman and party.

The Brothers: independent finish

- (4) From the top of the pinnacle step down for a few feet and traverse horizontally until a break appears which is climbed to the top.

Cam Fawr 180 feet. Very Severe.

Start: 20 feet right of Belshazzar at a large flake and an oak tree.

- (1) 50 feet. Up clean slabs with grassy holds to the prominent overhang. Step left then right back and go up a crack to a small oak (piton belay).
- (2) 80 feet. Traverse right and go up across a slab (piton) and across into the groove. Up the arête to a large flake belay.
- (3) 50 feet. Easily up the arête to finish.
First ascent: 9th October, 1963. C. Paterson, J. T. Bursnall, D. T. Bursnall.

CRAIG PANT IFAN

R.I.P. 140 feet. Very Severe.

Start at the lowest point of the remains of Hound's Head Pinnacle. At the foot of a thin crack. A filler-in.

- (1) 60 feet. Climb the thin crack and the slab above to a good ledge.

- (2) 80 feet. Go up the very prominent V-corner and then the slab above to a good ledge. At half height traverse into a chimney. Up this to the top. Scramble over broken rocks to finish.

First ascent in its new state: September, 1963. C. E. Davies, G. D. Roberts.

The Struggler 280 feet. Hard Very Severe.

There is a large tower of rock on Craig Pant Ifan which contains the final steep pitches of Pear Tree Variation and Strapiombo. This climb goes up the prominent groove between them. The groove is well situated, protection is good and the difficulty not excessive.

(1) } As for Strapiombo.
(2) }
(3) }
(4) }

- (5) 90 feet. Traverse right precariously along the tree branch, step into the overhanging groove and move up to a peg (in place). Using this for aid, step awkwardly into the main corner-groove. Climb this and layback round the overhang into a shallow chimney to finish.

First ascent: 5th April, 1964. B. Ingle, C. T. Jones.

Victimisation 240 feet. Artificial.

- (1) As for Scratch.
(2) 80 feet. Back up the chimney until it narrows. Swing out on a sling and climb the thin crack with the aid of slings on chocks and natural threads, until a move round the overhang can be made and free climbing taken until the

traverse of Arctic Circle is reached. Follow this to a sitting stance in Barbarian.

- (3) 50 feet. Climb the first overhang of Barbarian until it is possible to move out left for a move. Use a high peg to pull up to a good traversing line and then use another peg to swing round the corner onto the edge of Pincushion Slab. Peg stance in étriers.

- (4) 40 feet. Move up the slab directly for about 30 feet until the easy final crack of Pincushion can be followed to the top.

First ascent: February, 1964. R. James and D. A. Jones (varied leads).

Scratch Arête is the un-named climb given in last year's *Journal*.

Mangoletsi 210 feet. Hard Very Severe.

Start by the step on the path between Scratch Arête and the normal start of Scratch. The first pitch is the crux.

- (1) 90 feet. Climb up the left-hand side of a pinnacle and step left onto a grass ledge. Move right and go up a short groove to a small oak tree. Step right and go up another groove, left at the top and then straight up to the Scratch ledge.

- (2) 80 feet. Move left on to the slab and climb a thin crack to the overhangs (sling for aid 10 feet below the roof). Traverse left and climb the overhang of Barbarian.

- (3) 40 feet. From the tree step left on to the arête and follow this and a layback crack to the top.

First ascent: January, 1964. H. I. Banner, B. Ingle (alternate leads).

CRAIG Y TARW

This is the prominent outcrop facing the valley on the bluff called Y Glog on the further, north-west side of the outlet from Llyn Cwm-bach. The crag carries on the line of Craig Pant Ifan to the north-west. A climb, *Forest View's Shattered Cracks*, Severe, was done here on 22nd May, 1964, by G. Farnsworth, G. Barker, B. Frost, P. Barker, G. Pemberton. Starting 30 feet left of the stone wall, it climbed the long sweep of clean rock to a grass ledge, then moving right round the corner, returning left to the arête to finish.

CRAIG Y CASTELL

Iolyn 180 feet. Very Severe.

Start: About 15 feet left of the start of Tiercel.

- (1) 50 feet. Climb the grooves to the overhang. Climb this, moving right into a groove and up this to a peg belay and stance.
- (2) 60 feet. Move right to the arête. Go up for a few feet then move left to a grass ledge. Directly above to the tree stance of Tiercel.
- (3) Last pitch of Tiercel.

DIRECT FINISH. Hard Very Severe.

6 feet left of the small cave at the top of the second belay.

Climb the groove to the overhang and move left to a bottomless chimney. Move right at the top and up to a stance.

First ascent: 24th May, 1964. D. Thomas bach, G. D. Roberts.

Direct finish: June, 1964. D. Thomas bach, A. Cowburn, T. W. Heatherly.

Salix 170 feet. Very Severe.

Start: 20 feet right of Tiercel.

- (1) 70 feet. Traverse diagonally right across the slab to an obvious groove, which is climbed to a crack and a jammed block. Above it, traverse left to the arête and move up to a peg belay.
 - (2) 60 feet. Go diagonally right for 20 feet then up cracks and grooves to a tree belay.
 - (3) 40 feet. Straight over the overhang and move into the left-hand of two grooves until it is possible to step left, to finish on a large ledge.
- First ascent: May, 1964. D. Thomas bach, A. Cowburn, T. W. Heatherly (alternate leads).

Pellagra 180 feet. Extremely Severe.

This climb goes up the big corner between the Wasp and Tensor.

- (1) 30 feet. Climb up to the oak tree.
- (2) 50 feet. Continue up the groove to the bulge, turn this on the right, then come back left under the big roof. With the aid of a sling place a peg on the left wall and move up to the big grass ledge.
- (3) 100 feet. From the near end of the ledge climb to a break in the bulge, pass this with the aid of a peg and continue over the second overhang to the big roof. Traverse left using the crack under the overhang and finish up the last few feet of the Wasp.

First ascent: May, 1964. J. Brown, J. Cheeseman, K. I. Meldrum.

Tensor 260 feet. Hard Very Severe.

This climb traverses in above the first line of overhangs to the right of the Wasp. No artificial aid is used except for the two pegs in the final overhang. A varied steep climb with some very thin climbing.

(1) 100 feet. Pitch (1) of Tantalus to a pylon belay on the extreme right-hand edge of the upper slab.

(2) 100 feet. Diagonally left across the slab to the overlap. Move awkwardly over this into a small lay-back crack and then into a niche. Step precariously out right and up to a peg in place under the overhang. Using this and another pylon in the lip, climb the overhang into a slanting groove above and subsequently to a small stance and peg belay.

(3) 60 feet. The groove behind the stance.

First ascent: March, 1964. J. Brown, C. E. Davies.

Tantalus: independent finish

Starting from the stance after pitch (2), goes up and left to the front of the buttress.

120 feet. Climb the ribs on the left until you can gain a peg in the wall. With the aid of this climb up and left to the arête. Cross the smooth slab on the left to easier ground and ascend to the top.

First ascent: D. Yates, G. Simpkin.

Mensor 135 feet. Just Very Severe.

Start: 50 feet right of Tantalus below an obvious pinnacle.

(1) 45 feet. Climb the left-hand side of the pinnacle and

continue over the overhang to a sloping ledge. Poor belay.

(2) 90 feet. From the right-hand end of the ledge go to a groove. Climb the groove and the slab above to the top.

First ascent: 25th April, 1964. D. Alcock, A. Cowburn.

CRAIG Y GESAIL

Javelin: direct finish 100 feet. Very Severe.

Better than the original pitch. Go straight up a thin crack in the centre of the final slabby wall. It joins the original route at the top.

First ascent: D. Yates, G. Simpkin.

H. SNOWDON WEST

CASTELL CIDWM

The Straighter 130 feet. Very Severe.

Takes a direct line up the wall below the Curver.

Start below the finish of the Curver on a gangway slanting from right to left.

(1) 20 feet. Move left for a few feet and climb up a steep slabby wall. Come back right to a large niche and peg belay.

(2) 70 feet. Move left for a few feet and go straight up to the overhang, passing a large loose block. Traverse left to an obvious hole and go up the open chimney to the traverse of the Curver, 10 feet from the ring peg.

(3) 40 feet. As for the Curver.

First ascent: May, 1963. J. H. Swallow, A. Cowburn.

CWM SILYN — CRAIG YR OGOF**Kirkus's Climb Direct** 250 feet. Very Severe.

Climbs the bounding corner of the Great Slab.

- (1) 60 feet. Up to the overhang as for Kirkus's Climb, then straight up the slab to the sentry box.
- (2) 50 feet. As for Kirkus's Climb to a grass ledge.
- (3) 140 feet. Move up into the corner and climb this direct, with a short excursion left where the groove is grassy.
- (4) 40 feet. A short corner to finish.

First ascent: 20th May, 1963. B. Ingle, R. G. Wilson.

Briggs's Climb

Has now been climbed free by the above party.

The Crucible 500 feet. Extremely Severe.

Takes the front of the buttress between Ogof Direct and the Main Slab. Undoubtedly one of the best routes in Wales. Start at the foot of the central groove.

- (1) 60 feet. Climb easily up to a small overhang. Move left into another groove and go up this to a grass ledge and chock belay.
- (2) 40 feet. Traverse left under an overhang, climb a slab, then step right onto the overhang. Continue up to a grass stance and good thread belay.
- (3) 80 feet. Traverse back left onto some perched blocks. Climb up to the roof and over this with a peg to a sloping ledge. Move left into a groove, step down and traverse left across the steep wall into the obvious groove capped by a huge overhang. Up the groove for a few feet to a fine spike belay and small stance.

- (4) 120 feet. Back into the groove and up past a small overhang to a slab. Traverse right then go up a rib to the large overhang. Move right into a niche, then step right again into a groove. Up this to a large grass stance.

- (5) 200 feet. As for Edwards's variation finish to the Outside Edge.

First ascent: 1st July, 1963. B. Ingle, R. G. Wilson.

J. SNOWDON EAST**PINACL****Cancer** 90 feet. Very Severe.

Start: About two-thirds of the way up the crag and in the middle. A very clear-cut corner or rather a square recess with the climb going up the right-hand corner when looking straight on.

- (1) 55 feet. Up the corner till the left wall starts to bulge out. Climb the right wall with the aid of two pitons and then step back into the corner, finishing with two mantelshelves and stepping right onto a large grass ledge. Belay at the back to a spike.
- (2) 35 feet. Move left of the ledge to climb the fault which continues through to the top.

First ascent: 19th May, 1963. J. E. Robert, C. Bloor.

II. CORNWALL

All new climbs are included in the new guide-books, Cornwall, vol. II (the west and south coasts of West Penwith), by V. N. Stevenson, which is in the press, and vol. I (the north coast of West Penwith), by P. H. Biven, which is almost ready to go to press. J.N.

III. SOUTH EAST ENGLAND

After the appearance of the new edition of the guide-book last summer, the weather for the rest of the year was so poor that no new climbs of significance were done. J.N.

IV. THE CAIRNGORMS

A. N. HUSBANDS

THE CAIRNGORMS are not particularly noted for rock-climbing but the large amount of ground above the 3,000-foot contour makes them quite interesting for walking, particularly in the spring, and also for ski-ing.

Returning from a week in Skye in June, 1944, I broke my journey at Aviemore while my companions continued south. After cycling about six miles up to Loch Morlich I made an easy ascent of Cairn Gorm, but owing to the fact that the wind on the summit was of gale force I did not proceed to Ben MacDhui.

Having a day to spare on May 26th, 1956, I left Loch an Eilein early, intending to climb Cairn Toul and Braerich and then go on to Ben MacDhui and Cairn Gorm. The walk up Glen Einich was really lovely in the early morning sun and several deer were to be seen. Loch Einich was very attractive and the cliffs of Sgoran Dubh Mor and Sgor Gaoith to the right were quite impressive. I believe there are some climbs here but they are not done very often because of the time it takes to reach them. The track soon petered out and the angle of ascent steepened considerably but steady work eventually brought me to the top of Cairn Toul and I was rewarded by the finest view obtainable in this area. The northern sides of Cairn Toul and Braeriach are rocky and steep in contrast to the more rounded form of Ben MacDhui and there are some rock climbs below the summit of Braeriach. The Devil's Point stood out well to the right and there was a good view across to Ben Nevis. On the way to Braeriach one passes the Wells of Dee; here, in spite of the fact that the altitude is just on 4,000 feet, the flow of water is more like a young river than a stream. By the time I reached Braeriach I had covered about 14 miles horizontally and the heat was intense. I imagine it was about 110°F. because when I returned to Aviemore I found it had been 93°F. in the shade at this time. As it was, after descending to the Lairig Ghru the prospect of a steep climb of 1,700 feet to reach the summit of Ben MacDhui no longer appealed.

Times have changed in the past few years and it is now possible to drive a car half-way up Cairn Gorm and then take a chair lift, if it is not too windy, to a height of about 3,600 feet; so the time taken to reach the summit of Cairn Gorm

on foot can be measured in minutes. However, even allowing for the fact that it is possible to reach an altitude equivalent to the summit of Snowdon without effort, it is still necessary to walk over five miles in horizontal distance — roughly equal to going from Y Wyddfa to Pen yr Ole-wen as the crow flies — and climb about 1,000 feet in vertical height before the summit of Ben MacDhui can be reached.

March 19th, 1963 was inclined to be cloudy, and I was glad to join six army mountaineers at a bothy some 50 minutes away from Cairn Gorm. This bothy has an iron pipe about 4 inches in diameter and 10 feet high with a bell on top which is rung by the wind, so that one is guided to the shelter in very bad weather; on this occasion the bell could not sound because the strength of the wind in a recent gale had bent the whole shaft to such an extent that the bell could no longer swing on it. After leaving Cairn Lochan behind we occasionally sank well past the knee in pockets of soft snow. While we were crossing a vast snow field the clouds lifted for some minutes and this saved us much time, because there are a number of tops and they all have rather a similar appearance. Unfortunately, however, shortly before we reached the summit of Ben MacDhui the clouds engulfed us and we were only able to guess from the Cairngorm Club's indicator what the view might be like. According to this it is possible on a clear day to see Ben Hope 92 miles away. This compares with the view from the Matterhorn of Monte Viso 98 miles away.

Snow was now falling; as my companions were making for the Shelter Stone by Loch Avon I deemed it prudent to commence the return journey before the tracks were obliterated. But in spite of the fact that there had been the tracks of seven people to follow the snow rapidly covered most of them over, and only by keeping a watchful eye for the odd hole made by the shafts of the ice axes was I able to continue without having recourse to the compass. As I lost height visibility improved, and on reapproaching Cairn Gorm I found a place where it was possible to do a most enjoyable glissade into Coire Cas. From there an easy walk brought me back to the chair lift where I reported the damage to the bell shaft.

V. IRELAND, 1963

In the early days of rock climbing in Ireland the sharp blue peaks of the Twelve Bens in Connemara were an immediate attraction. When the great buttress of Ben Corr was discovered it was thought that this would be the main centre of climbing in the country; the main face was over a thousand feet high and seemed to provide endless possibilities for new climbs. But after a few years of regular visits and many new routes Ben Corr dropped out of the limelight. The climbs are all rather similar, with delicate moves on small quartzite holds, few belays and lots of exposure; the climbs lack individual character and today only the thousand-foot Hard Severe *Seventh Heaven* attracts the discerning climber.

In the summer of 1963 a series of small buttresses were visited near the head of the fiord of Killary. These start in a little valley which runs down into the landlocked Little Killary Bay. The first buttress forms a definite pinnacle and two climbs were made on this, the direct route giving a nice 100-foot Hard Severe. On the next buttress up the valley a Severe climb of about 90 feet was made up the

obvious slab and finishing up an easy chimney. These climbs were made by Miss E. Healy, S. Rothery and F. Winder.

New climbs in 1963 included:

CAMADERRY, CO. WICKLOW

Aphrodite. Two short variations to this climb were made. One was on the right-hand wall of the vertical groove (Hard Very Severe, August 1963, P. Higgins and E. Goulding). The impressive left-hand wall was climbed almost to the top until the holds gave out, causing an untimely descent.

There is a clean wall to the left of the final pitch of *Aisling*, with two thin cracks. The first of these, Mild Very Severe, was climbed by E. Gaffney and P. Higgins in March 1963. The route finished up the left-hand edge of the wall.

The second crack, on the right edge of the wall, Very Severe, was climbed by P. Higgins, E. Goulding and E. Gaffney in March 1963. About 100 feet to the right of *Sebastian* is a new route of approximately 120 feet, Hard Severe, made by E. Goulding and P. Higgins with J. Tobin, August 1963. This climb starts below an obvious groove which leads from a wide ledge with a holly tree. The groove is climbed until it steepens and then moves right at the top.

LOUGH BARRA, CO. DONEGAL

Intensive new-route bagging over the last few years seems to have halted and no new climbs were made on these very popular granite buttresses last year. *Plough-share* was repeated several times and graded about Very Severe.

Surplomb Grise. 560 feet. Very Severe. Was first climbed by F. Winder in 1955 and was not repeated until last year. This is a beautiful line just to the right of the Thin Gully.

GLEN VEAGH, CO. DONEGAL

Monument. 400 feet. Very Severe. May 1963. E. Goulding and P. Higgins (leads shared). This climb starts in the great corner on the left of the main face and right of *Empathy* and finishes out on the rib on the right-hand side of the corner in its upper part. This is a climb of sustained difficulty, dramatic and very exposed.

Setanta. 400 feet. Hard Severe. May 1963. Miss E. Healy, P. O'Halpin (leads shared). This climb is to the right of *Sinn Fein*.

SEAN ROTHERY

NORTHERN IRELAND

Since the first Mourne rock climbing guidebook was brought out some years ago, so many new climbs have been put up that it has been found necessary to bring out a supplement to the guide. This was published in late 1963 and was out of date before it was published, so fast are new climbs being put up. Generally nowadays the climbs are of a fairly high grade. There is still quite a lot of scope for new routes, both artificial and free, but as our own tigers are very active, this may not be the case for very long.

Should anyone require any more information on Mourne rock-climbing they should contact Miss D. McMaster, Secretary I.M.C., Biochemistry Department, Queens University, Belfast.

Some of the more important climbs of 1963 are:

SPEELACH BUTTRESS

One Each. 130 feet. Hard Very Severe.

Start: The second triangular block to the right of Speelach Chimney.

(1) Climb to the grass ledge, and traverse right to a keyhole belay.

(2) Up sloping holds to vegetated finger bowls and the summit.

First ascent: 15th June, 1963. D. Dick, C. Moore (with top rope for last pitch).

LOWER COVE MOUNTAIN

Ding Bat. 60 feet. Difficult.

Start 20 feet right of the extreme left-hand edge of Lower Cove. Up over the obvious overhang to a large block, then straight up the right-hand wall to the top.

First ascent: 15th May, 1963. J. Milligan, J. Sloane.

EAGLE ROCKS

Lichen. 70 feet. Severe.

Between Raven's Nest and West Chimney Wall there is a corner with a thin crack. The climb goes up this crack to a corner which is then climbed to the top.

First ascent: 21st September, 1963. J. Brown and F. Devlin.

Milky Way. 140 feet. Severe.

In the centre of Jupiter Wall an eroded groove runs up the face.

(1) Up the eroded groove to a heather ledge (thread belay).

(2) Finish by easier rocks.

First ascent: 21st June, 1963. D. Dick and C. Moore.

Solstice. 120 feet. Very Severe.

Start: The right-hand edge of Jupiter Wall.

(1) Up 10 feet by a strenuous layback to the bottom of a large sloping platform (piton belay).

(2) Traverse left below the overhang on delicate holds onto the top of the first pitch of Milky Way.

(3) Finish as for Milky Way.

First ascent: 21st June, 1963. D. Dick, C. Moore.

Determination. 100 feet. Very Severe.

Start: Just to the right of West Chimney Wall Gully.

(1) Ascend the crack to the right of the large block until the top of the block is gained. Ascend on sloping holds to the foot of a steep greasy slab (piton belay).

(2) Traverse left onto the arête, and climb to the top.

First ascent: 12th October, 1963. J. Brown and F. Devlin.

F. P. DEVLIN

VI NORWAY

R. M. Gamble and F. L. Jenkins visited the Okstindan Range in June 1963. From a camp south of Lake 748 metres they climbed on 10th June, 1963 the East Ridge of Svarttind, also known as Hekletind, 1868 metres (first ascent). The route was eastwards up the glacier and southwards to the snow col on the East Ridge, and then by a superb "alpine" ridge of 900 feet to the summit. Very Difficult with some hard pitches.

Other climbs were Okstind, 1808 metres, by the North Face, and the traverse of Pt 1435 metres, Oksskoltén, 1912 metres, and Okshornet, 1907 metres, to the col below Svarttind (or Heklettind), 1868 metres.

On the way south Store Skågstølstind was climbed by Heftye's Renne.

VII CANADA

M. E. B. BANKS

Together with three members of the American Alpine Club, I took part in an expedition to the Logan Range, a little known area of excellent granite peaks in the Mackenzie Mountains of the N.W. Territories of Canada. The range is very remote and can only be entered by float plane operating from a point half-way up the Alaska Highway. Ten virgin peaks of between 8,000 and 9,000 feet were climbed and excellent-quality climbing was enjoyed. Much scope remains; in fact the range has hardly been scratched at.

VIII KULU

I send a note of two interesting ascents made by Bob Menzies (A.C.) and me in the Kulu district of the Punjab Himalaya last post-monsoon season (1963).

On 7th October we climbed the unnamed pass of 16,391 feet between Kulu and the Bara Bangahal in the Dhaulā Dhar range. The approach was by way of the Solang nullah in which we camped at 12,000 feet, one mile short of the pass. The pass is situated in the ridge which links Hanuman Tibba (19,450 feet; Bruce's Solang Weisshorn) with Mukar Beh (19,910 feet) about five miles to the north. Time up: 3½ hours. Time down: 1 hour. Believed to be the first ascent by mountaineers.

On 12th October we reached the summit of an unnamed and probably unclimbed peak at the westernmost point of the north containing wall of the Solang nullah. It is situated on the ridge referred to above and is about two miles due south of Mukar Beh (19,910 feet). Height by aneroid barometer: 17,525 feet. The summit climb along the east ridge, with occasional excursions onto the north face, was made from a camp at 16,500 feet on the glacier névé. Time up: 3 hours. Time down: 1½ hours.

R. G. PETTIGREW

IX HIGH ATLAS, MOROCCO, MAY, 1964

Party:

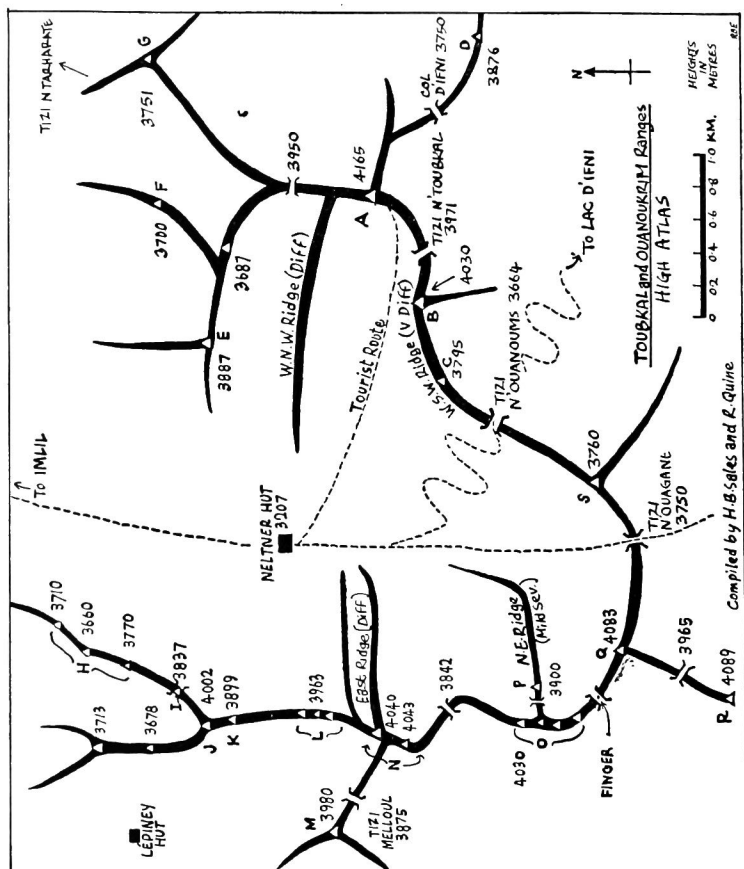
Jo Kretschmer, Harry Sales, Richard Huddy, Robin Quine (Climbers' Club); Graeme Day.

Peaks climbed (in a fortnight):

Toubkal (W.S.W. Ridge and W. Ridge), Toubkal West (including new route on S.W. face), Tête d'Ouanoums, Timesguida n'Ouanoukrim, Ras n'Ouanoukrim, Akioud n'Bou Imrhaz, Tadaft (N.E. Ridge), Afella n'Ouanoukrim (E. Ridge), Clochetons, La Tour, Biiguinnoussene, Tadat, Aguelzim, Tazarharht, Aksoual (N. Ridge), Tazegaout n'Louah, Afella n'Talat n'Taout.

Also climbing on Gibraltar.

R. QUINE



- | | | |
|----------|----------------------------------|-----------------------|
| A | Toubkal | 4165m. |
| B | Toubkal West | 4030m. |
| C | West Shoulder or Tête d'Ouanoums | 3745m. |
| D | Ouimililene | 3876m. |
| E | Tibheirine n'Timellilt | 3887m. |
| F | Tikint n'Ouanas | 3700m. |
| G | Afekhoï or Toubkal NE | 51m. |
| H | Aguelzim | 3770m. |
| I | Tadat | 3837m. |
| J | Biuguinousse | 4002m. |
| K | La Tour | 3899m. |
| L | Clochetons | 3963m. |
| M | Tazarharht | 3980m. |
| N | Afella n'Ouanoukrim | 4043m. |
| O | Aljoud | 4030m. } n'Bou |
| P | Tadaft | 3900m. } Imrhaz Group |
| Q | Ras n'Ouanoukrim | 4083m. |
| R | Timesguida n'Ouanoukrim | 4089m. |
| S | Bou Ouzzal | 3760m. |

Sub-committee on Welsh Nomenclature

Report on First Three Years' Work

Members: R. Elfyn Hughes, M. G. Hughes, J. H. Emlyn Jones, J. Neill.

1. The Sub-Committee have met informally from time to time in the last three years, though it has been difficult to get all the members in one place; the last such meeting was at Pen-y-Gwryd on 13th October, 1963. Considerable business has also been transacted by correspondence.

2. *Guidebooks.* The Welsh place-names used in new or revised editions of the Club's guidebooks are reviewed by the sub-committee. In deciding on the place or route name to be used, the following are taken into account:

- (a) Current and traditional usage, including Ordnance Survey and local usage; in general a law of priority is applied.
- (b) Correctness of meaning (or whether the name used means what it is supposed to !).
- (c) The meaning of the Welsh place-names is included in each guidebook.

Outside help has been obtained from the following: Prof. Sir Ifor Williams, Prof. R. Alun Roberts, C.B.E., Evan Roberts and C. Elfyn Hughes.

Names in the following guidebooks have so far been reviewed: Snowdon South, Moelwynion, Clogwyn Du'r Arddu, Tryfan and Glyder Fach, Llanberis North, Cwm Idwal.

In addition the Welsh glossary in the forthcoming Penguin Handbook on Mountaineering (by Alan Blackshaw) has been reviewed.

3. *Field Survey.* A limited amount of field-work has been achieved, mainly in the Moelwynion and the Ogwen area. Names occurring in early literature or in use locally but not given on the Ordnance Survey have been identified. The sub-committee are particularly indebted to Evan Roberts and Sir Ifor Williams for considerable help in the analysis of place names in Cwm Idwal; a number of important and interesting names have emerged.

A start has also been made in recording the enormous number of unpublished names in local use in the Carneddau.

4. *Liaison with Ordnance Survey.*

- (a) *At national level.* Two members of the sub-committee attended a conference of non-official map users organised in London by the Ordnance Survey, and made contact with the principal officers of the Survey; this contact has been maintained.
- (b) *At district level.* Contact has been made with the Kidderminster office of the Ordnance Survey, which serves North Wales. The Survey's usage of Welsh place-names is determined on the advice of the Board of Celtic Studies in

Cardiff, but they also have to get the blessing of local authorities for any major changes in names. They are very interested in the activities of the sub-committee and have given us every encouragement, including lending us their office copies of large-scale maps. The 6-inch maps of Snowdonia will not be revised for 10-15 years yet, so that there will be ample opportunity for the results of the sub-committee's work to be incorporated on the maps.

5. *Liaison with local education authorities.* The sub-committee consider that grammar schools in local districts could give considerable help in the field survey of place-names in Snowdonia. Teachers of Welsh history and geography would be particularly concerned, and the elder children could do much in talks with local farmers. The possibility of establishing this liaison is being established; initial plans for the Gwyrfaï valley have been handicapped by the departure of M. G. Hughes to Lincolnshire.

We have had an offer from Messrs. John Maclean and Sons for help by their Under Twenty-five Club in the survey work required to pinpoint the natural features for which new names are disclosed, as the amount of detail on the 6-inch maps is often insufficient for this.

6. *General conclusions.* The sub-committee consider that the task before them of recording, correcting and interpreting, and the rediscovery by historical enquiry of Welsh place-names in the main climbing areas, is a long-term one. It will be necessary therefore to keep the position under constant review, thus incorporating in guidebooks new names, and correcting old ones, in the light of field-work and advice received. It can be stated categorically that there is never any need for climbers to invent names for crags, for in Snowdonia **all** crags have names in local use; it is unfortunate that in the past some names invented by climbers have supplanted local names. For this and other reasons, with the passage of time many eloquent and charming place-names have gone out of use. The sub-committee will record these, and will try to reintroduce some. From time to time the results of the sub-committee's work will be published in the *Journal*; the first such article will appear in the 1964 *Journal*, summarising all the findings on place-names to date.

R. ELFYN HUGHES

J. NEILL

December 1963

Mountaineering — an Indian view

The President has received the following communication :

Wisdom Garden,
P.O. Kapkote,
District Almora,
India.

Adorable Immortal Soul,

Venerably I hail you with most cordial expressions of welcome and am gay with exceeding wondrous merriment in communicating thee in black and white at this special juncture in order to press mine humble material on "Mountaineering" to the Climbers' Club for possible use.

In this connection it is subjoined that this awkward soul is engaged in research on sovereign science for the last 21 years by sojourning in various parts of India and abroad; nowadays, at the above indicated place. The thesis on "The Blissful Rose of Wisdom Garden" is the outcome of my continued and inquisitive quest after wisdom.

Further I pray thee to be abundantly benign in arranging to pass on a copy of "Mountaineering" with a view to broadcasting it over the radio for which humane deed I should feel life-long obligation to you.

If published in any journal be gracious enough to mail me a copy thereof.

Please acknowledge receipt. With salutations to the Climbers' Club.

Thy own soul,

G. C. JOSHI
(Sovereign Science Scholar).

MOUNTAINEERING

By G. C. Joshi, Sovereign Science Scholar, Wisdom Garden, Glacier View, P.O. Kapkote, District Almora, India.

Mountaineering is a divine hobby, a kingly game, a queenly subject, a perilous exercise, an aristocratic pastime, a musical glee, a magical sport, an elevating education and an angelic refreshment. The noble goal of Alpinists towards climbing the loftiest peaks could comfortably be accomplished through the cherubical weapons of constancy; purity of heart; discrimination; freedom from pride, envy, covetousness, gluttony, lust and sloth; fortitude; unhaughtiness; geniality of speech; absence of anger even on provocation; refraining from malicious gossip; absence of the feeling of self-importance; external purity; forgiveness and faith.

Monarchs, saints, scientists, philosophers, artists, poets, travellers and anglers were called upon allured and enamoured by the glamour, sublimity, scenic beauty, grace and elegance of the snow-capped peaks all over the Old World as

well as the Western Hemisphere since the dawn of time. The track to snowy peaks is not strewn with roses; on the contrary, it is a path covered with thorns of hazard and peril, nevertheless, at the end of it there is the full-blown rose of mountaineering awaiting the eager-adventurous-cum-heroically tired Alpinists thus saluting them with most cordial expressions of welcome in a spirit of meekness with a view to enlighten, humanise, refine, and elevate Alpinists' ethical, intellectual, mental and social nature as also instilling in them feelings of fraternity, truth, cosmic love, freedom, justice and equal opportunity whereby they will walk in the light of benevolence, companionableness and the hidden honey of human compassion.

In the fields of all-embracing education, international culture, global fellowship, world understanding and fraternal civilization — the role of gracious Alpinists is paramount in transforming the terrestrial globe into a celestial one, thereby sending forth showers of love-embroidered prosperity, everlasting virtue and the holy grail of sublime peace to the benign souls of the Western Hemisphere as well as the Eastern.

The universe is so vast and so ageless that the life of high-spirited Alpinists can only be justified by the measure of their sacrifice, spirit of service and by becoming lovers of hospitality, lovers of goodmen, just, sober, holy, temperate, fearless, and above all, engaged in research on mountaineering craft for human illumination and nurturing congenial feelings of tenderness as well as of marvellous loving kindness towards all created beings.

The Rock and Ice: The Last Demise

OR THE GOSPEL ACCORDING TO THE CLIMBERS' CLUB

(The Editor has received the following communication from an anonymous but known source. He leaves Messrs. Austin and Crew to deal with the request at the end of it — see “New Climbs and Notes” in this Bulletin.)

The Rock and Ice were mighty men
But now we will give you all the Gen
Although once tough and bold
Now with age they're getting old
Baron Brown is now a “ninny”
and Donald Whillans is known as “minny”
Nathaniel Allen in his old bath chair
Is looked on as a real old bear.
Harry Smith, bald and stout
Finds “Vector” hard, troubled by gout.
Mortimer Smith, crutches at the ready
Is belayed on to hold him steady.
Eric Beard has lost his pace
On the 3000rs no more will race
Roscoes working on a pension
Says it's better than climbing tension
Dennis Grey is more than done
The end of the race is surely run.
The younger lads are feeling the strain
Last Demisings on their brain
Lightning Smith can only climb
One foot in the grave half the time
Derry Hadlum round and rotund
Is only kept going by a fishing fund
Gnome Burnell can't get off the ground
And Will McLoughlin is nowhere to be found
Steven Read has gone to get married
The truth is out he had to be carried
Appleyard's infirm and going to seed
The Rock and Ice dead: yes indeed:
The one last hope is letting them down
Daniel Boone is turning a clown
This team of damp squibs are finished and done
The climbers' club is now number one
The Rock and Ice are hardly ever out

All rheumaticy, sinous, deafness and gout.
In 1963 they did the odd route
Not much at all, no line to shoot
The Central Tower of Paine was climbed
By one of these pensioners a climb he timed
The Welsh 3000rs record went Kaput
As did Skye ridge, Gorms and Mourne afoot
The Bonnatti pillar climbed in 14 hours
By the Rock and Ice's faded flowers
The Sans Noms face yielded a way
To a team that really had seen its day
North Face Midi, Crocodile Ridge
Aiguille Du Plan and Brenva "Fridge"
Geant by its hardest route
They even cracked the Detassis route
West Face of the Petites Jorass'
These poor old has-beens they did pass
Bühlweg, Brenta they did see
Vajolet, Bregaglia and had their tea
Laliderer, Wetterstein they did go
Fought it out in freezing snow
They ought to stop all the same
Old, infirm and totally lame!

Epilogue from the Rock and Ice member.

The Rock and Ice still snatch the plum
Despite the Shoe Champions 'Ee bah Gum.
The pendulum has swung we hear you tell
How uninformed can you be: Bloody hell! (ex-Steptoe)
Little Hills suit little men
Get your training on the Ben
You too may then sit and smile
At journals ex-clubs infantile
Little hills for little men
You haven't even got the Ben!
Last Demise is not very nice
Apologies please! from the ROCK AND ICE

Editorial

My apologia at the beginning of this number of the *Bulletin* indicates that the latter would best have served its purpose if it had appeared at the beginning of the summer climbing season in Wales. And all the essential copy was to hand in time for this modest deadline to be met. But circumstances outside the control of either myself or the printers have delayed publication of the *Bulletin* for many months, so that now it seems that it will present material only for winter fireside reading. Perhaps we shall be luckier with the next number (should the experiment be deemed worth continuing), and shall have it available at a more directly useful time.

The Club has lost two active younger members in climbing accidents, John Emery and John Jenkinson. An obituary of Emery appears in the forthcoming number of the *Journal*. John Jenkinson was little known to most members, since after leaving Imperial College he worked mostly abroad for an oil company. Other members who died in the last year were Bill Turrall, who is also the subject of an obituary in the *Journal*, and more recently our ex-President Dr. Tom Longstaff; and, after a road accident, George Densham, who had been a member of the committee and not long ago agreed to take over the treasurership when the present holder of that office, Kretschmer, relinquished it. The death of Aldous Huxley should also be recorded. Although he does not appear ever to have been a member of the Club, one of his earliest published works was written for the 1912 *Journal* while he was still an undergraduate at Oxford.

The only major change in the Club's officers is in the secretaryship, now taken over by Chorley after almost three strenuous years by Westmacott; J. H. Longland has taken over the assistant secretaryship. Emyln Jones has replaced K. M. Lawder as Vice-President. Stop-press and very welcome news is that R. W. Beard has agreed to resume the custodianship of the R. W. Lloyd Hut, to fill the gap left by the resignation of Jack Nelson. P. Evans has become custodian of the R. O. Downes Hut on the departure of Langmuir to Scotland, where he has become warden of Glenmore Lodge; Meldrum has succeeded the latter at White Hall, while Grey has taken up a similar post at Aberglaslyn Hall.

During the year A. B. Hargreaves, J. L. Longland and H. E. L. Porter have been elected to honorary membership in recognition of their very great work in the past for the Club. Outside the Club, J. W. Smith has received a well-deserved B.E.M. for his rescue and youth training activities in Cornwall.

The temporary huts sub-committee, under the chairmanship of J. Poole, has been very active and a considerable improvement in the condition of the Welsh huts has resulted. The Committee has sanctioned the expenditure of fairly large sums of money for this purpose and also for the same purpose at the Count House.

The new arrangement for distribution of guide-books seems to work well and has relieved the Club of much financial strain; sales continue to increase.

Revised reprints of *South-East England*, *Llanberis North*, *Cwm Idwal* and *Tryfan and Glyder Fach* have appeared, each with plastic covers and a supplement of new climbs to bring it up to date; the last three have excellent new diagrams by R. B. Evans. Members are reminded that they can obtain copies of all four guides at the reduced price of 8s. 6d. post free, if ordered direct from the wholesalers, Messrs. Camtors, Jackson and Warr, provided they enclose cash, with their order. New editions of *Snowdon South* and *Cornwall* (vol. II, covering the west and south coasts of West Penwith) are at present at the printers; the long-anticipated *Llanberis South*, *Carneddau* second edition and *Cornwall* (vol. I, north coast of West Penwith) seem at last to be nearly ready to go to the printers.

The library is so little used by members that it has regretfully been agreed to dispose of it, and arrangements are in hand to sell most of the books.

Members of the Club were little involved in expeditions to the bigger mountains of the world in 1963, and no member took part in a major Himalayan expedition, though Pettigrew was active in Kulu and Cole visited Chitral. East Africa was popular; Nicol and Wedgwood climbed on Mount Kenya,* J. G. R. Harding visited both Kilimanjaro and Kenya early this year, and Brooke ascended Kilimanjaro. Fisher has climbed in the Canadian Rockies, the interior ranges of British Columbia, Alaska and the Yukon during most summers in recent years and has bagged a number of new peaks. Busk and Band have made further ascents in Venezuela, and Shipton continues his activities in Patagonia. Wall took part in the ascent of Rondoy in Peru. This summer Cole, Kendall and Tyson are in Nepal and J. D. C. Peacock is with the Combined Services Expedition to South Georgia. Westmacott has been to the Brooks range, Alaska, C. T. Jones, E. Beard and Rhodes to Alam Kuh, Persia, and Huddy, Kretschmer, Quine and Sales to the High Atlas. Tilman and Marriott are off again to the Arctic for maritime mountaineering. Jenkins has made further new ascents in Norway, both last year and this. The British expedition to Gaurisankar led by Dennis Gray does not, for once, include any of our members.

Both at home and in the Alps the weather in 1963 was poor, but this did not deter members from making many good climbs. Those in Wales are dealt with in *New Climbs and Notes*. The Alps are again best dealt with in tabular form, only a selection of the best climbs being given:

Mont Blanc Massif

Chamonix Aiguilles: Complete traverse from Midi to Blaitière—Swallow and C. T. Jones.

Aiguille du Midi: West Face, Frendo Spur—Ingle and Crew; Patey.

South Face, Rébuffat Route—Swallow and C. T. Jones.

Aiguille du Plan: West Face, Gréloz-Roch Route—Patey (with new direct finish).

Aiguille du Peigne: North Ridge—Swallow and C. T. Jones; Ingle and Crew; Rogers.

Aiguille du Blaitière: West Face, Brown-Whillans Route—Ingle and Crew.

Grand Capucin: East Face—Sutton.

* As did Wrangham and Brooke.

Petites Jorasses: West Face—Ingle and Crew; Swallow was rescued from it by helicopter after a fall.

Aiguille sans Nom: North-West Face (new route)—Patey.

Bernese Alps

Eigerwand: Attempt by Patey (retreated from second ice-field in bad weather).

Bregaglia

Piz Badile: North-East Face, Cassin Route—Rogers.

Dolomites

Cima Grande di Laveredo: Comici Route—Morgan.

Cima Piccola di Laveredo: Spigolo Giallo—Rogers.

Cima Piccolissima di Laveredo: Preuss Route—Rogers.

Cima Ovest di Laveredo: North Face, Cassin Route—Austin and Metcalfe.

Punta Civetta: North-West Face, Fessura Aste—Ingle and Crew (4th ascent).

Torre de Valgrande: North-West Face, Carlesso-Menti Route—Ingle and Crew.

Torre Trieste: South-West Ridge, Cassin-Ratti Route—Austin and Metcalfe.

In Wales the B.M.C. North Wales sub-committee has continued its activities in frustrating conditions and matters progress slowly. Camp sites have at last been agreed to at Pen-y-Pass and at Nant Peris, but there is no sight yet of a proper solution to the problem of camping in the Llanberis Pass, and access agreements for the approaches to mountains and crags are far from completion. About two-thirds of the Snowdon Nature Reserve have now been established, and it is hoped that establishment of the remainder is not far off.

On the control and certification of teachers and others taking parties of young people on the hills, a matter on which many of us hold strong views, agreement has at last been reached and a scheme is now being set up by the C.C.P.R. with the participation of the B.M.C.

It remains for me to thank Cunningham as Business Manager and Slee-Smith as typographical adviser for their help in producing this *Bulletin*, also the *Journal* and guidebooks, and the Cloister Press for their usual patience and high standards of work. Rogers has been appointed Assistant Editor as a prelude to taking over *Journal* editorship next year.

Reviews

SOUTH-EAST ENGLAND. By E. C. Pyatt. (Climbers' Club, 12/6; available direct from Camtors, Jackson and Warr Ltd. to Climbers' Club members for 8/6 post free).

The publication of this revised edition of the 1956 guidebook will be welcomed by the many climbers who visit Harrison's Rocks and other outcrops in South-East England, particularly as the earlier version has been out of print for some time. The text has been revised to take account of the main changes since 1956. The Introduction to Harrison's Rocks for example refers to the fact that the Rocks have been purchased for climbers by the B.M.C. and gives the rules now governing their use (e.g. no camping, fires or boots whether nailed or vibram). The new routes are all in a 12-page Appendix, mainly the work of David Fagan and John Smoker and their friends of the Sandstone Climbing Club.

The authors have made some sensible changes in the grading of the hardest climbs, and have introduced a further grade, "VI A". Previously it had been held in this guidebook that no climb on an outcrop could merit this grading, which was reserved for mountain routes, and it is refreshing to see this change of heart. It has never been really clear to me why British guidebook writers have not used numbers to grade the technical difficulty of pitches on big climbs or on outcrops alike, leaving words to be used for the overall description of the route. This is of course the system used in the Guide Vallot for the French Alps and it would seem capable of adaptation to our conditions. It has the merit that new standards can be introduced as the level of technical achievement advances, since the supply of numbers is, in the nature of things, inexhaustible.*

The new format, with illustrated plastic covers, is highly successful and those responsible must be congratulated for using it. It seems a pity, however, that it has been found necessary to dispense with photographs inside the book; the 11 plates in the 1956 Edition were a valuable feature. Presumably mounting costs have made this necessary.

If a purely personal view may be permitted, I would add that I find it confusing to follow the Harrison's Rocks descriptions because the climbs are listed from right to left when facing the crag, instead of the more convenient left to right. In addition, it might be easier to orientate oneself at Eridge Green if the diagrams had north at the top of the page instead of at the bottom as at present. These points are however of small consequence, and the guidebook as a whole remains a thoroughly competent and valuable work.

A. BLACKSHAW

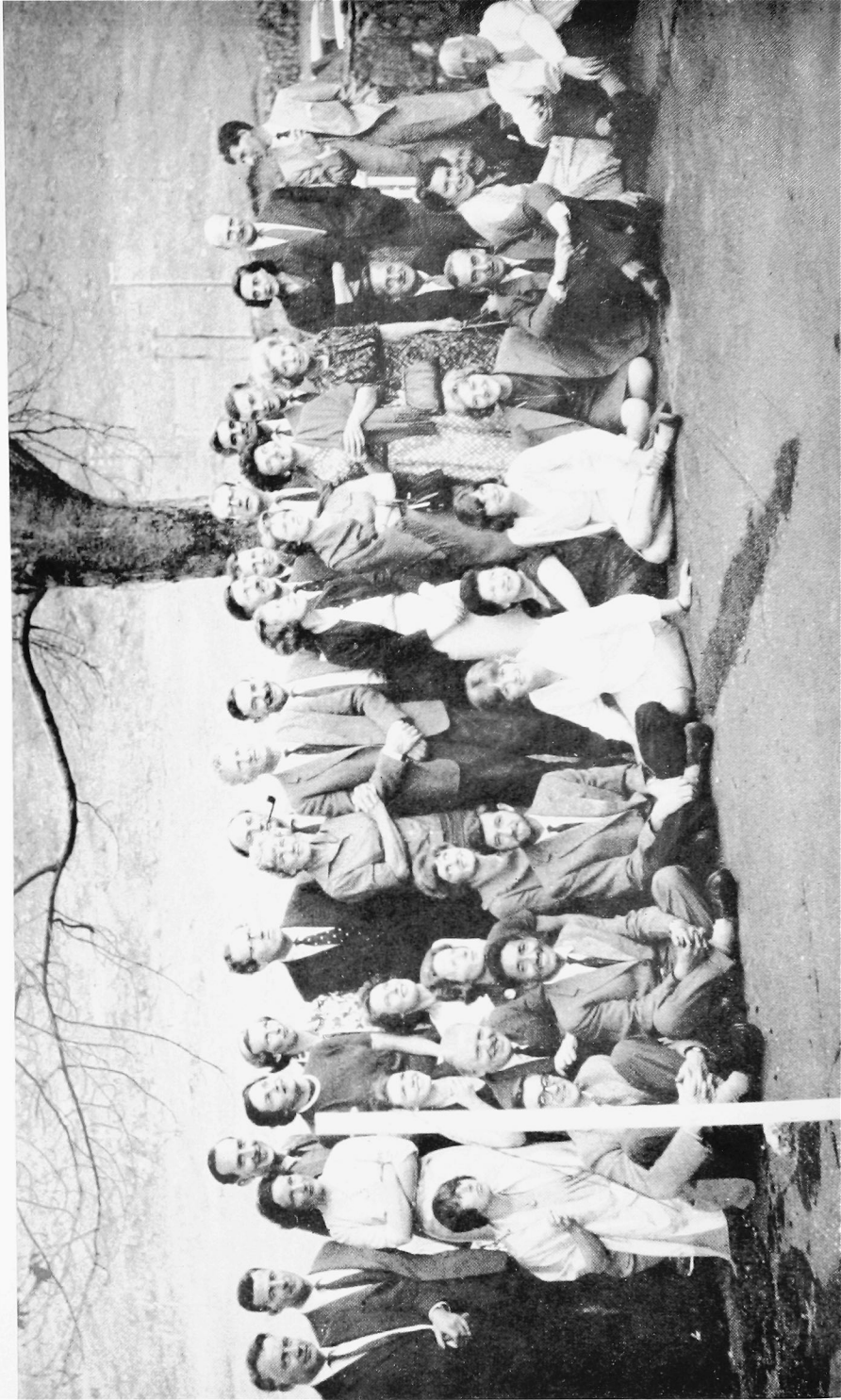
* See article by Wilson and Crew in the 1964 "Climbers' Club Journal", where this system of grading is applied to Clogwyn Du'r Arddu. (Ed.)

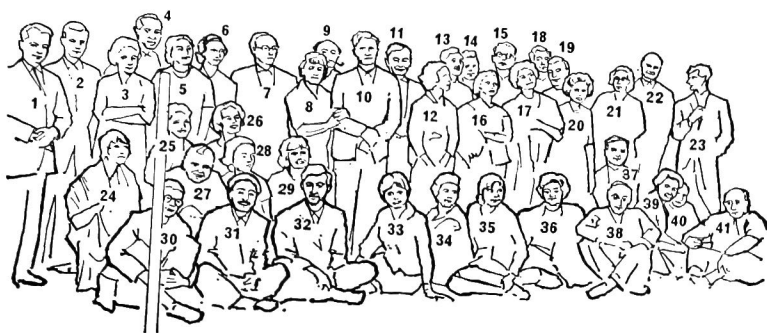
COASTAL CLIMBS IN NORTH DEVON. By C. H. Archer (Privately, 1961. Out of print though it may be possible to get an odd copy for libraries. pp 49. Maps).

This is a remarkable book; one of the few, or even perhaps the only one of recent years, which I have read from cover to cover immediately on receiving it.



**WARNING.
ROCK
CLIMBING IS
DANGEROUS.**





KEY TO PHOTOGRAPH ON FACING PAGE

- | | |
|--------------------------|--------------------------|
| 1 R. C. Evans | 22 T. McKinnon |
| 2 J. N. Mather | 23 J. Morris |
| 3 Mrs. J. N. Mather | 24 Mrs. R. C. Evans |
| 4 A. K. Rawlinson | 25 Miss Jane Briggs |
| 5 Mrs. A. K. Rawlinson | 26 Mrs. H. G. Nicol |
| 6 Mrs. J. H. Emlyn Jones | 27 C. B. Briggs |
| 7 Dr. G. Pugh | 28 Mrs. M. H. Westmacott |
| 8 Lady Hunt | 29 Mrs. W. G. Lowe |
| 9 Dr. E. J. Clegg | 30 M. H. Westmacott |
| 10 Sir John Hunt | 31 Tenzing |
| 11 J. H. Emlyn Jones | 32 W. G. Lowe |
| 12 Mrs. M. P. Ward | 33 Miss Prudence Hunt |
| 13 A. H. Streater | 34 Mrs. A. Gregory |
| 14 A. D. M. Cox | 35 Miss Jenny Hunt |
| 15 Dr. H. G. Nicol | 36 Mrs. C. B. Briggs |
| 16 Mrs. A. H. Streater | 37 J. A. Jackson |
| 17 Mrs. J. A. Jackson | 38 J. L. Longland |
| 18 M. P. Ward | 39 Mrs. T. D. Bourdillon |
| 19 J. H. Longland | 40 W. Vaughan Thomas |
| 20 Mrs. B. R. Goodfellow | 41 A. W. Bridge |
| 21 Mrs. G. Pugh | |

EVEREST TENTH ANNIVERSARY REUNION,
PEN-Y-GWRYD, 1963

B. R. GOODFELLOW

We have been familiar for years with the traversing ideas and techniques propounded and developed by A. W. Andrews in Cornwall. Here we have the same things applied and worked out independently in North Devon, and the cliff foot has now been traversed every inch of the way from County Gate to Saunton Sands. The book in telling of the struggles with the rocks, the vegetation and the tides and the painstaking search for routes and for easy ways down is an epic of diligence.

This is, in fact, just the sort of climbing to interest the enthusiast whose technical ability does not reach the very high standard now required for making new routes on mountain crags or outcrops. My personal hope is that I fail utterly to convince anyone else of the truth of this statement.

A typescript supplement brings the story up to the end of 1962.

EDWARD C. PYATT

SECRET TUNNELS IN SURREY. Compiled by H. Pearman (Records of the Chelsea Speleological Society, Volume 3, July 1963; pp. 61. Numerous plans and diagrams).

This is a fine work of scholarship which will be welcomed by everyone who has potted about at any time in the man-made tunnels of S.E. England. Just as the London climber makes do with Harrisons Rocks, so does the London caver have to spend his time in these chalk or sandstone caves without water, ladder pitches or formations. They can provide nevertheless some interesting moments as long as the explorer keeps one eye on the stability of the roof.

EDWARD C. PYATT

SELECTED CLIMBS IN THE DOLOMITES.

Edited by P. Crew (Alpine Club Guidebooks, Vol. 3, obtainable from Thomas J. Gaston, 21/-; or 18/- to members of the A.C. and A.C.G.).

This volume is the third in the series of guidebooks, written by members of the Alpine Club and the Alpine Climbing Group, designed to cover a representative selection of the climbs in popular Alpine areas.

For many British rock climbers the first step to Alpine mountaineering may be a season or two on the limestone cliffs of the Eastern Alps, and this guide has made it possible to approach the cliffs much as one would the crags of Llanberis or the Lakes, without the uncertainties of inadequate translation. It is a most handsome volume with striking cover photographs by Rebuffat and Desmaisons sealed into transparent plastic.

In his introductory notes the Editor makes some extremely helpful observations concerning transport, huts, equipment and gradings. Particularly pertinent is his comment regarding the lack of water; in British hills or the Western Alps there is usually an abundance of water in various forms, but on a long Dolomite route dehydration can become serious. At this point a general warning about drinking untreated water would have been worthwhile. The water supply at many

unofficial camp sites appears suspect and one would recommend boiling; an attack of dysentery can effectively ruin a short holiday. It would also be useful, in this section on general information, to state the situation of the climber who has the misfortune to be involved in an accident in a country with no National Health Service and where the smallest medical attention can be expensive. A short note on insurance and the cost involved would be welcome.

The guide is very well supplied with over 50 maps and illustrations. The diagrams, by Brian Evans, are as usual excellent. They are clear and unfussy and provide a very adequate indication of the general line of the route. This is really all that is required as, once on the climb, a diagram is generally useless. It must be stressed that the guide contains only a selection of the climbs and it could be said that the compilers of the volume have selected, in the main, very difficult climbs. It is, however, being increasingly realised that British climbers have been too self-effacing in the past and that a competent leader of a British Very Severe should have little difficulty with a Grade 6 in the Dolomites. Adequate warning is given in the case of climbs of unusual difficulty or complexity; for example in describing the Spigolo Giallo, a very popular route with British climbers, the author writes on page 132, "Do not attempt to follow the line on the left of the arête which is incorrect and extremely difficult", an error this writer has made and one which was the cause of a British fatality.

The omission of the Eger-Fisch route on the South Wall of the Cima Piccola di Lavaredo is a pity, but in any selection of climbs excellent routes are inevitably left out.

This guidebook will prove invaluable to the climber visiting the Dolomites for the first time, and to the expert with several seasons to his credit, who will find therein many of the extremely difficult classic routes of the Eastern Alps. It is a most welcome addition to the series and makes one very eager to see the proposed volumes on the Kaisergebirge and Karwendel.

P. H. BIVEN

GUIDEBOOK TO MOUNT KENYA AND KILIMANJARO (2nd Edition).

Edited by Ian C. Reid. (Mountain Club of Kenya, EA 16/-).

The Mountain Club of Kenya deserve congratulation on their magnificent second edition of this guidebook. Completely revised and up to date as far as new climbs are concerned, with full details of the fine north face routes on Nelion which should be enough to attract even the modern tigers from Chamonix, there is as much additional information on the fascinating geology and botany of the area as the general reader will be able to stomach in a hut at 14,000 feet. Anybody in England with £200 to spare for the return air flight to Nairobi should get this book at once and enjoy a three-week holiday in the East African Alps. They will get as much climbing in three weeks as they would in Switzerland, at a higher altitude, and admittedly at a higher price, but the distinction conferred on a climb by anoxia can only be bought with gold. January, February and probably July are the best months.

H. G. NICOL

THE WHITE MOUNTAIN GUIDE. Edited by Howard M. Goff (Appalachian Mountain Club, Boston, \$5.00)

Consisting of 500 india-paper pages packed with detailed information, this is not a guidebook one would browse through for pleasure. Nevertheless it is an indispensable book for New England walkers, as its seventeen editions show. In the thickly forested and lonely White Mountains of New Hampshire planning is essential if mountain walking is to be enjoyed, and the A.M.C. guide provides the data on trails and times, landmarks, refuges and sources of water which enable plans to be made.

The guide hardly deals with mountaineering, in the sense of the word used in Britain, although there is a chapter on Mount Washington in winter. This can be a formidable proposition by the easiest route in some conditions. Temperatures are frequently down to -20°F. , and the record anywhere in the world for wind velocity (231 m.p.h.) was observed on the summit in 1934. As for rock-climbing, in the words of the guide — "Because of extreme hazards when undertaken by inexperienced or insufficiently equipped climbers or groups, descriptions of rock climbs are omitted".

M. H. WESTMACOTT

POBEZHDENNYE VERSHINY: SBORNIK SOVIETSKOGO ALPINIZMA 1958-1961.

(*Conquered Summits: manual of Soviet Mountaineering 1958-1961*). Under the general editorship of Ye. D. Simonov (State Publishing House of Geographical Literature, Moscow 1963. 71 kopecks; binding 15 kopecks).

The contents are:

Expeditions

V. A. Kizel. Mountaineering Expeditions, 1958-1961.

K. K. Kuzmin. In the Heart of the Pamirs.

A. I. Polyakov. In the High Altitude climbing arena of the country.

Ya. G. Arkin. White Spots of the North-West Pamirs.

M. A. Greshnev. Face above the Valter Glacier.

V. A. Smit, V. M. Tsetlin, M. M. Bongard. Fourteen above the Pamirs.

A. K. Belopukhov, V. M. Bozhukov. To the distant ranges of the Tien Shan.

A. N. Osintsev. Attack on Ailama.

Sporting Ascents

V. P. Egorov, A. I. Pamirsky. To the north face of Mizhirgi.

S. M. Savvon. High assaults by Leningrad men.

Science and Mountaineering

A. M. Gusev. Antarctica—land of mountains and eternal snows.

A. B. Chudaykin. A quarter-century of Elbrus expeditions.

Experiment and Practice

Ye. A. Beletsky. 1395 on Elbrus.

V. M. Abalakov. Some paths of improvement of mountaineering technique.

Ya. G. Arkin, B. V. Minenkov. Contemporary climbing equipment.

Abroad

K. K. Kuzmin. To Everest from the North.

P. S. Rototaev. Swiss on Dhaulagiri.

Ye. B. Gippenreiter. To Hidden Peak.

F. A. Krolf, K. P. Rototeav. Japanese climbers on the 8000ers.

V. L. Prokazka. Czechoslovak ascents.

A. G. Ovchinnikov. Soviet climbers on French rock.

G. I. Anokhin. Climbers of flat countries.

Himalayan chronicle 1958.

Reviews and Bibliographies

K. B. Ivanov. Literary notes.

V. S. Barsukov. Voice from afar (review).

Chronicle. Reference material

The best sporting ascents.

List of sports qualifications in climbing.

Material for the Chronicle of Soviet Mountaineering.

Gryaznov's Peak.

CLUB JOURNALS

MOST of us do not read more than a few climbing journals a year, usually the same ones. It is a rather overwhelming experience to sit down to 20 or so in a few days (or, as the Editor reminds me, in too many weeks!). The impression gained is one of tremendous activity over all the mountain ranges of the world: climbing in Teneriffe follows climbing in the Himalayas; a modest exploring expedition accentuates the account of some hair-raising feat. Inevitably one concentrates on what interests oneself and overlooks much that is of interest to others.

The style of the journals varies too. Most authors are mainly concerned with the climbing (after all, this is the thing they like doing!), and one can almost read the pleading letter an enthusiastic editor has written to ask for an article. One or two clubs obviously have an attitude and jargon of their own, and their journals are clearly best appreciated by their own members. It is all the more pleasing to find articles of literary merit amidst the welter of routes, camps and difficulties.

The outstanding journal in this respect, as well as in subject matter of interest, is the *Alpine Journal*. John Hunt writes movingly on the Pamir Expedition. The Indian's different philosophical approach to life underlies Hari Dang's beautifully written account of the Indian Everest Expedition. Fosco Maraini, that sympathetic observer of people, writes about the old lion, Cassin, on Mt. McKinley. The Chinese photograph supporting their claim to have made the first ascent of the North ridge of Mt. Everest is shown, with various comments. It will be a pity if this "ascent" remains in the same state of obscurity as the attempt of Mallory and Irvine; it is perhaps significant that similar disputes have occurred over ascents of McKinley and Mont Blanc. Ian Clough gives a very competent account of the North face of the Eiger; clearly Chris Bonington and he were properly equipped, in every sense, to do the climb, unlike many of those who make the attempt. Dyhrenfurth gives a very full list of unclimbed Himalayan 7,000 and 6,000 m. peaks which will help the collectors of new mountains.

The *American Alpine Journal* is written in the usual refreshingly exaggerated American style. When John Harlin climbs the Eiger, it is clear that not all the

Europeans on the face at the same time are fit to be there. No one appears to have obtained a weather forecast beforehand, and we have the usual harrowing account of bad weather, avalanches on the Spider etc. I particularly liked the method of deciding where the Exit Cracks lay: take the crack with the biggest pressure of snow coming down; this is the longest one and therefore the right way.

In this journal there is an up-to-date account of modern Yosemite rock climbing. Prusiking up the rope is standard technique when regaining a position previously reached; and the names of the new pitons are far more suggestive than ours. I liked particularly the postage-stamp sized Rurp (Realized Ultimate Reality Piton) and the onomatopoeic Bong-Bong, four inches wide. Alaska and the Andes occupy a large part of the journal, and tucked away in all this is a brief account of the West Face Direct of the Petit Dru. We are not even given a "topo" of this, though there is a beautiful one of the Walker. The photographs in this journal are excellent.

The *Fell and Rock Climbing Club Journal* has again John Hunt on the Pamirs. Some expeditions, like the Jagdula Expedition, seem to sprawl across several journals. There is a good account of the newer routes on Cloggy by Soper. Greenbank writes about a favourite route of mine, the South ridge of the Salbit-schijen. Nancy Smith gives us an excellent photograph of Dawa Tensing, but unfortunately not one of Denise Evans' encounter (in pyjamas) with a well-dressed European at an Indian railway station.

The *Himalayan Journal* has a good account of the fine ascent of Nuptse. Gill writes about Ama Dablam and Harrison about Makalu. Unfortunately this journal always arrives so late that previous accounts make these later ones of historical interest only. Hari Dang appears in another guise, as a hunter incidentally going to Nanda Devi.

The journals of those clubs of the climbing elite, the G.H.M. and the A.C.G., give brief and laconic accounts of their climbs. The G.H.M. gives a complementary list to Dyrrhenfurth's in the *A.J.*, namely a list of ascents of Himalayan peaks over 7,000 m. I detected one or two minor inaccuracies, which always seem to be inevitable in such lists. The A.C.G. gives a list of members, present, past and deceased. I note with interest that the mortality rate of the Club is about 15 per cent.

The *Rucksack Journal* contains a delightful article by Tom Waghorn, "Confessions by a Yo-Yo", an account of efforts to follow the masters of the Rock and Ice. His description of falling off on Don Whillans reminds me, for comic effect, of Arnold Carsten's story of how he fell off the crux of Bow-Shaped: "My second, who was upside down . . ."

The *C.U.M.C. Journal*, although a bit obsessed with fear, is better than usual. The Club seems to share the ability of more senior Clubs to go all over the world.

Adopting the Shakespearian method of casting the ladies last (to avoid arguments about precedence) we now come to the *Ladies' Alpine Club Journals*, 1963 and 1964. I found an account of the ascent of Teide in Tenerife particularly interesting, especially as the climber, mistakenly, had only gym shoes, which provided unusual problems in the upper icy section of the climb. There is a good reminiscing account of Nea "Barnard" and the G.H.M. with a photograph of the Aiguille de Roc, one of the trophies.

The Jagdula expedition appears in this journal and the *Pinnacle Club Journal*, where Nancy Smith's account of a nasty fall reminds one of the similar skill of Stirling Moss in a racing accident. No sooner had they come to a halt, then they were both already moving to safety out of the track of their pursuers, Nancy Smith under a convenient overhang and Stirling Moss for the edge of the course. Jo Fuller gives a most amusing account of her introduction to artificial climbing; standing in an étrier attached only to her waist is the least of her troubles. The standard of the Pinnacle Club seems to rise as fast as that of male clubs. Jo Scarr gives an account of the lead of Cenotaph Corner, and that without being able to do a single pull-up.

I must now disentangle myself from the details of the individual journals to say that I have thoroughly enjoyed the concentrated reading I have done, and recommend the job of reviewing the other clubs' journals as being one any member should welcome.*

M. J. BALL

* *Members please note: any volunteers for next year?* (ED.)

JOURNALS RECEIVED

AJ, nos. for 1963.

Him.J., 1961 and index for vols.1-21.

American AJ, 1963.

Canadian AJ, 1963.

NZAJ, 1963.

J of MC of S. Africa, 1962.

Die Alpen, monthly nos. March 1963-March 1964.

All quarterly nos. for 1963 and first quarter of 1964.

(The place of the third quarterly no. for 1963 is taken by *La Montagne dans la Peinture*, a beautifully-produced book presented by the S.A.C. to its members to mark its centenary. The text, by Ulrich Christoffel, in the version sent to us translated into French by Henry-Jean Bolle, deals with the subject exhaustively in 138 pages, and is illustrated by 56 splendid reproductions of paintings ranging in date between Roman times and the present day.)

DAVMitt., nos. for Jan.-Sept. 1963.

MC of Kenya Bull., June and Dec. 1963.

Sierra Club Bull., all monthly nos. for 1963, and annual nos. for 1962, 1963.

Appalachia, May and June/July 1963.

ACG Bull., 1963.

GHM Bull., 1962.

LAC, 1963, 1964.

Pinn. CJ, 1961-2.

Mountaineering, nos. for 1963.

JFRCC, 1963.

SMCJ, 1963.

Rucksack CJ, 1963.

Cambridge Mtg., 1963, 1964.

Birmingham UMCJ, 1963.

British Ski Year Book, 1963.

Ski Notes and Queries, nos. for 1963.

Officers of the Club

President: SIR JOHN HUNT

Vice-Presidents: J. H. EMLYN JONES
M. P. WARD

Hon. Treasurer: J. M. KRETSCHMER

Hon. Secretary: The Hon. R. R. E. CHORLEY

Hon. Librarian: I. G. MCNAUGHT-DAVIS

Hon. Editor

(Journal and Guide-Books): J. NEILL

Assistant Hon. Secretary: J. H. LONGLAND

Hon. Custodians: P. E. EVANS
C. T. JONES
K. M. LAWDER
J. P. NELSON
D. THOMAS

Hon. Hut Booking Secretary: H. B. SALES

Committee: J. A. AUSTIN
G. BARKER
M. J. CUNNINGTON
C. E. DAVIES
B. INGLE
J. POOLE

